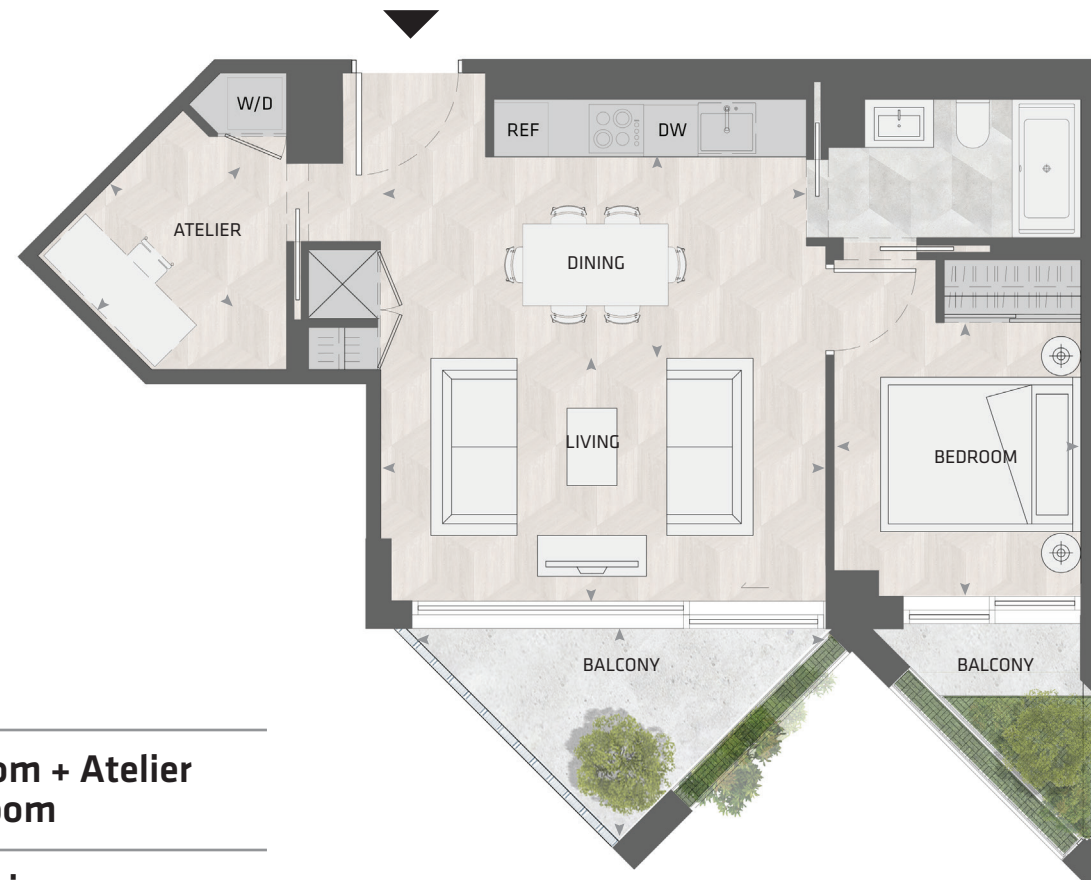


KING

HOME 502 N



1BD.17

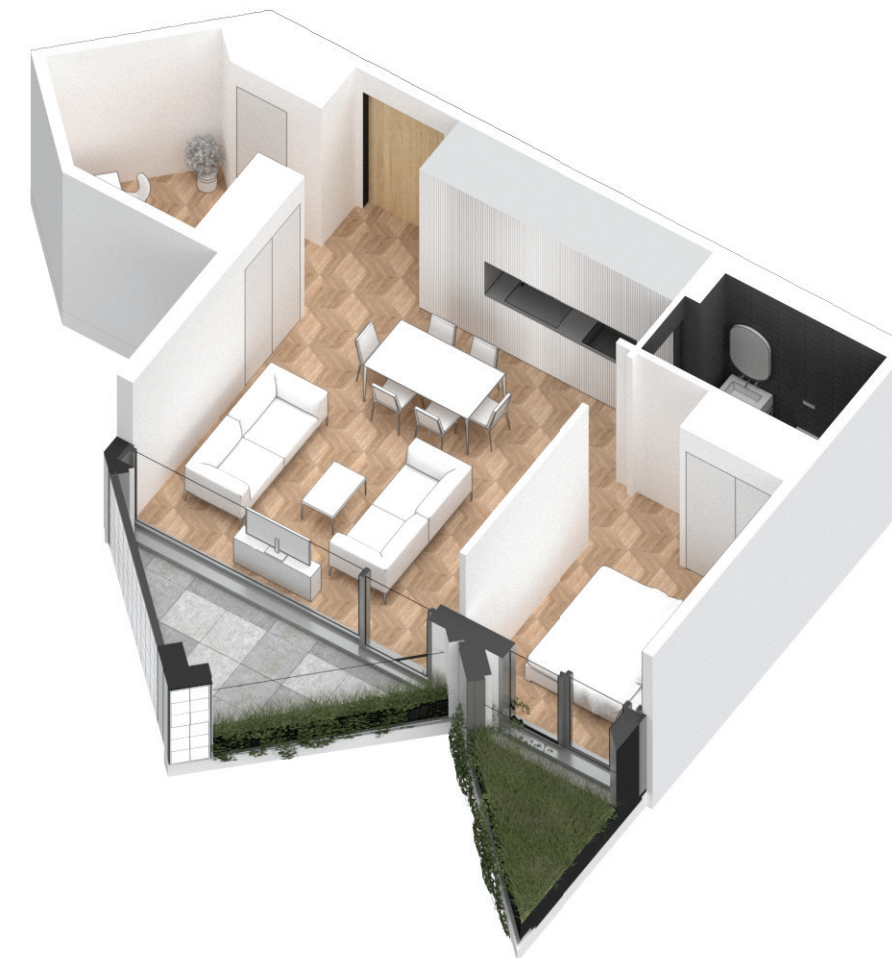
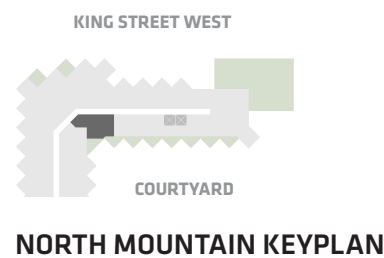
**1 Bedroom + Atelier
1 Bathroom**

**Total Living:
754 ft²**

Interior Living:
627 ft²

Exterior Living:
127 ft²

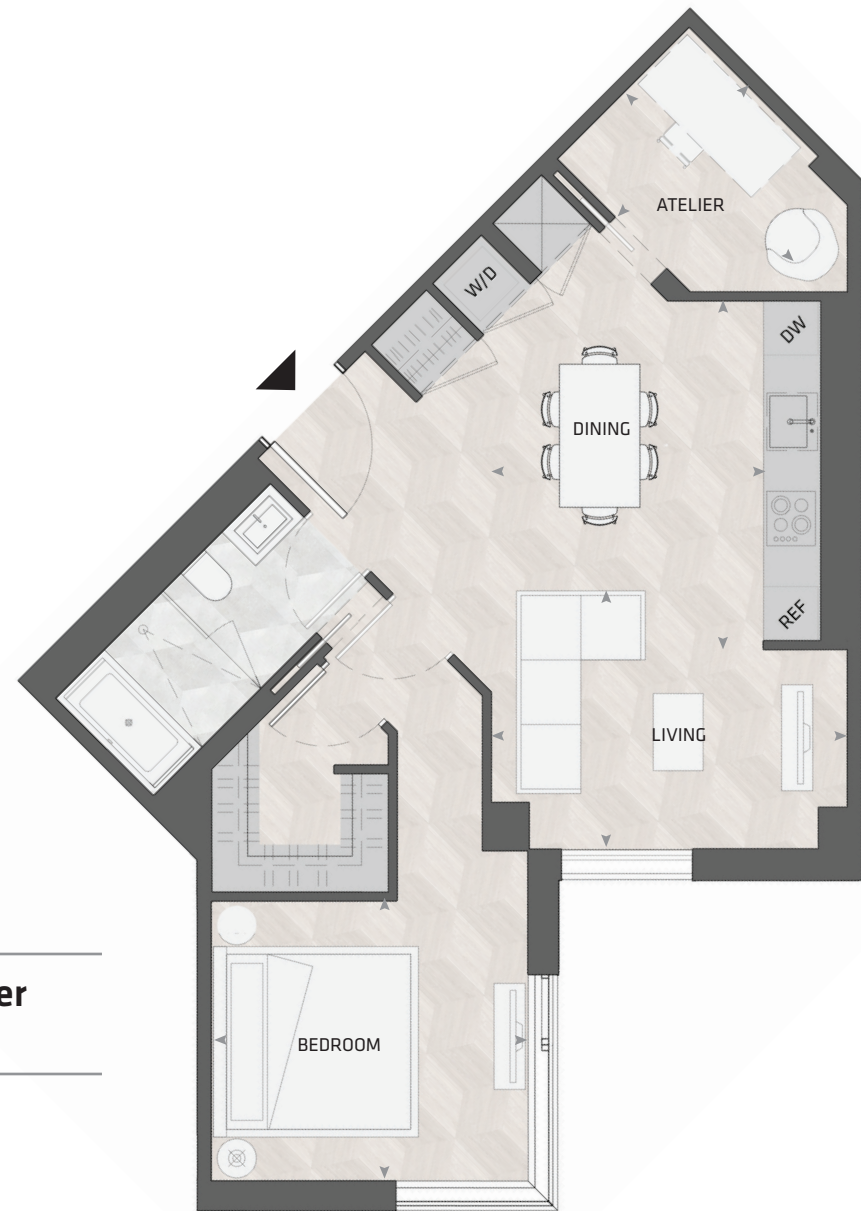
LIVING	16' 1" X 8' 9"
DINING	16' 1" X 7' 3"
BEDROOM	8' 11" X 9' 10"
ATELIER	7' 3" X 5' 10"
BALCONY	13' 0" X 7' 9"



All dimensions and specifications are approximate. Certain plans are reverse or mirror image. Balcony square footages are estimated and may vary from that stated. Please see Sales Representative for details. Furniture not included. Refer to key plan for unit location and orientation. E. & O.E.

KING

HOME 506 N



1BD.74

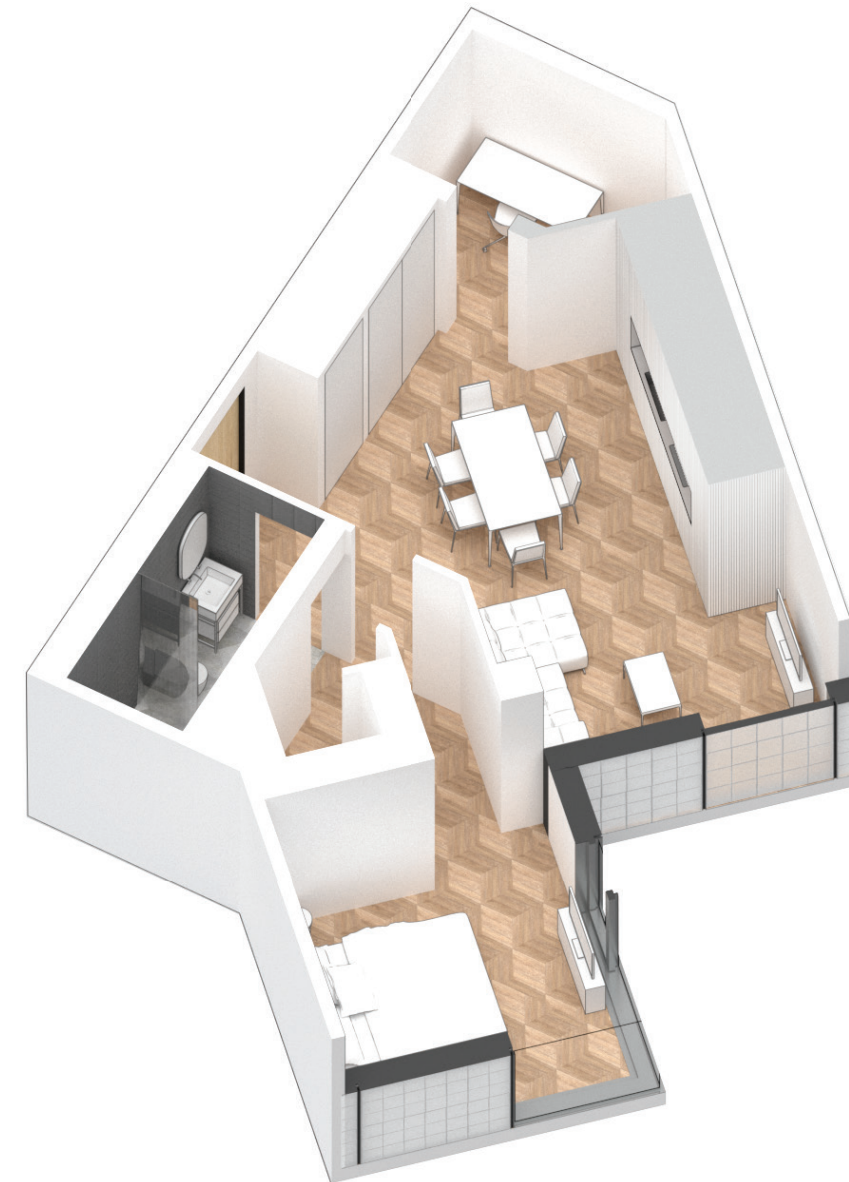
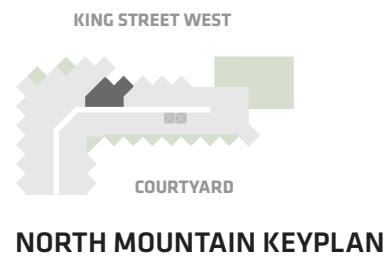
**1 Bedroom + Atelier
1 Bathroom**

**Total Living:
762 ft²**

Interior Living:
762 ft²

Exterior Living:
N/A

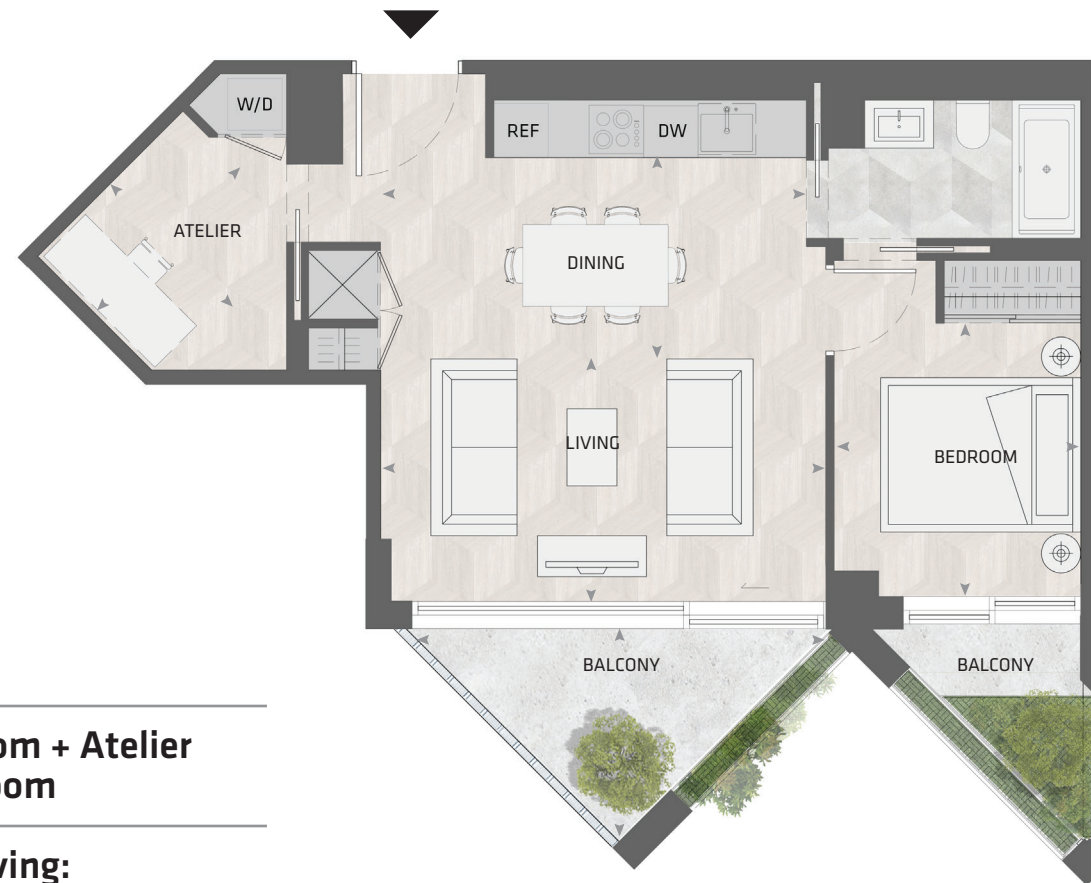
LIVING	12' X 11" x 9' 4"
DINING	9' 10" x 12' 7"
BEDROOM	11' 5" x 10' 2"
ATELIER	6' 9" X 8' 2"



All dimensions and specifications are approximate. Certain plans are reverse or mirror image. Balcony square footages are estimated and may vary from that stated. Please see Sales Representative for details. Furniture not included. Refer to key plan for unit location and orientation. E. & O.E.

KING

HOME 602 N



1BD.17

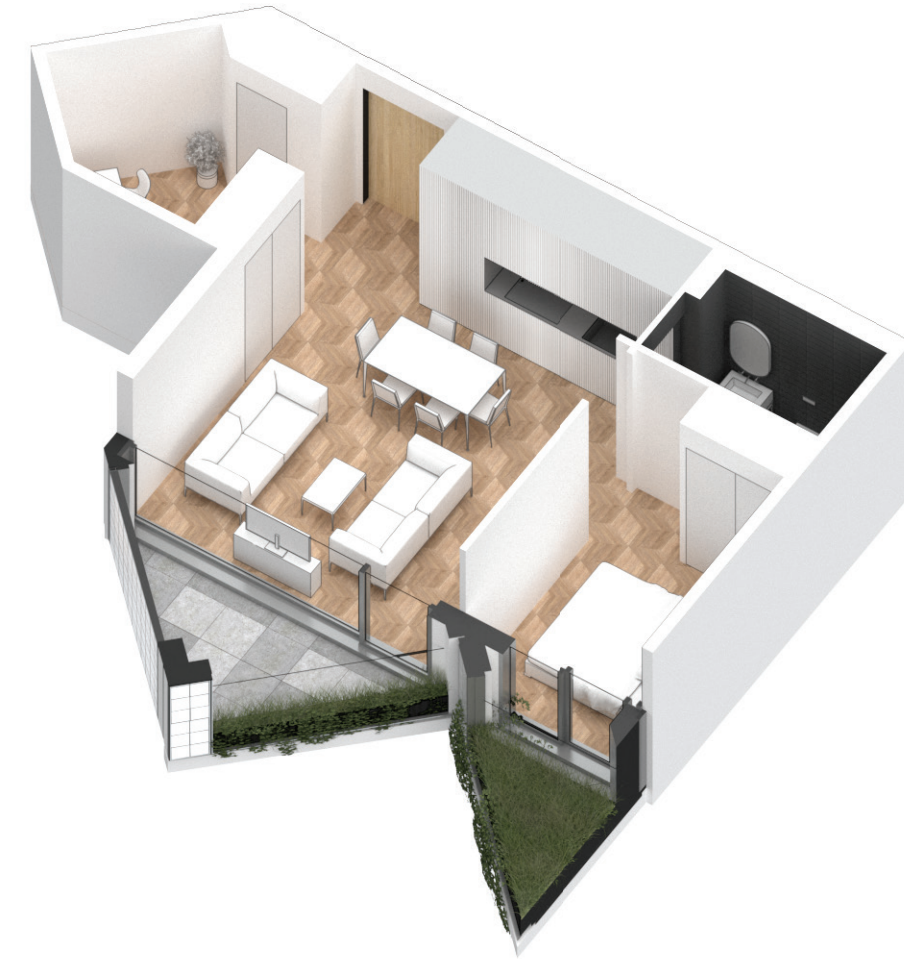
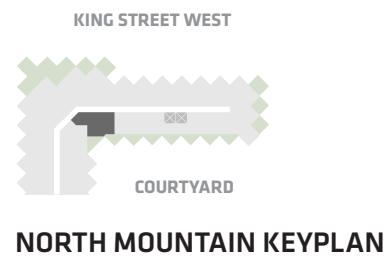
**1 Bedroom + Atelier
1 Bathroom**

**Total Living:
755 ft²**

Interior Living:
635 ft²

Exterior Living:
120 ft²

LIVING	16' 1" X 8' 9"
DINING	16' 1" X 7' 3"
BEDROOM	8' 11" X 9' 10"
ATELIER	7' 3" X 5' 10"
BALCONY	13' 0" X 7' 9"



All dimensions and specifications are approximate. Certain plans are reverse or mirror image. Balcony square footages are estimated and may vary from that stated. Please see Sales Representative for details. Furniture not included. Refer to key plan for unit location and orientation. E. & O.E.

KING

HOME 606 N



1BD.22A

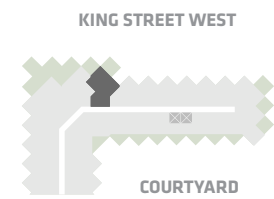
1 Bedroom + Atelier
1 Bathroom

Total Living:
793 ft²

Interior Living:
626 ft²

Exterior Living:
167 ft²

LIVING/ DINING	11' 4" X 10' 10"
BEDROOM	10' 0" X 10' 0"
ATELIER	5' 8" X 5' 1"
TERRACE	6' 8" X 8' 3"



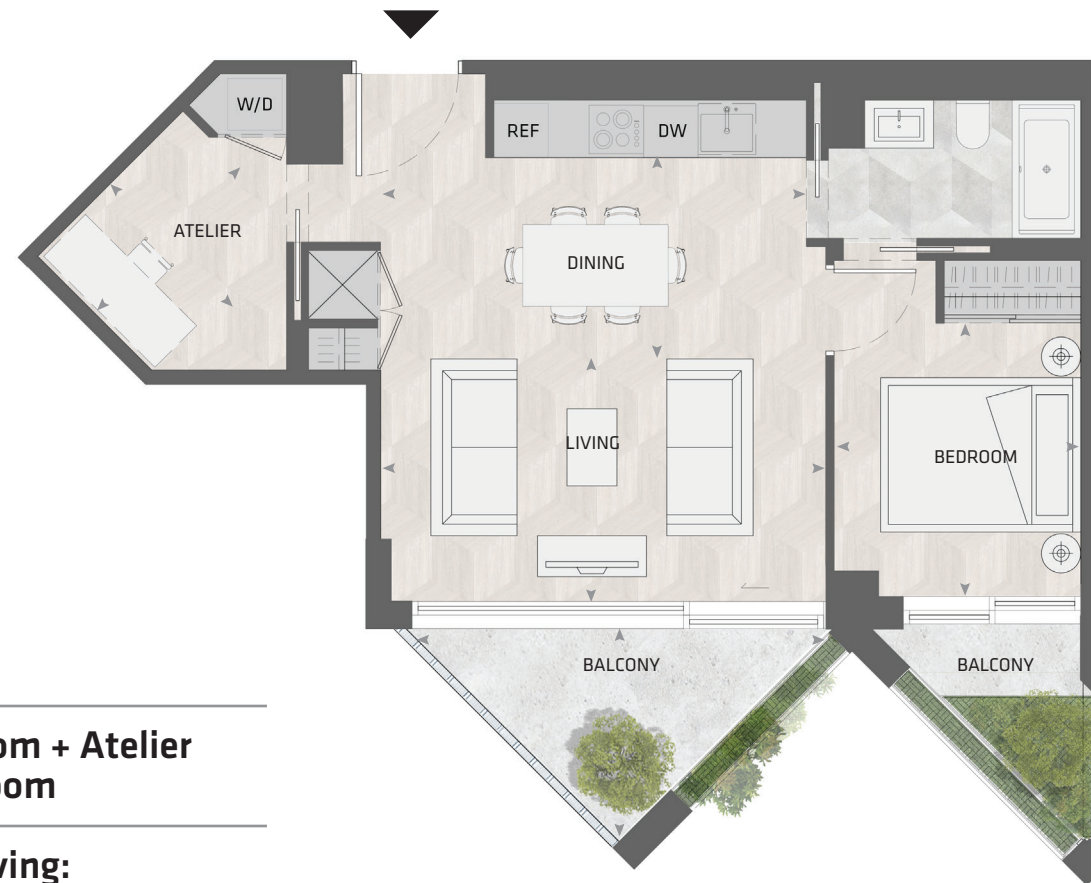
NORTH MOUNTAIN KEYPLAN



All dimensions and specifications are approximate. Certain plans are reverse or mirror image. Balcony square footages are estimated and may vary from that stated. Please see Sales Representative for details. Furniture not included. Refer to key plan for unit location and orientation. E. & O.E.

KING

HOME 902 N



1BD.17

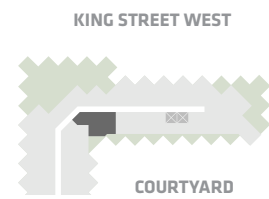
**1 Bedroom + Atelier
1 Bathroom**

**Total Living:
758 ft²**

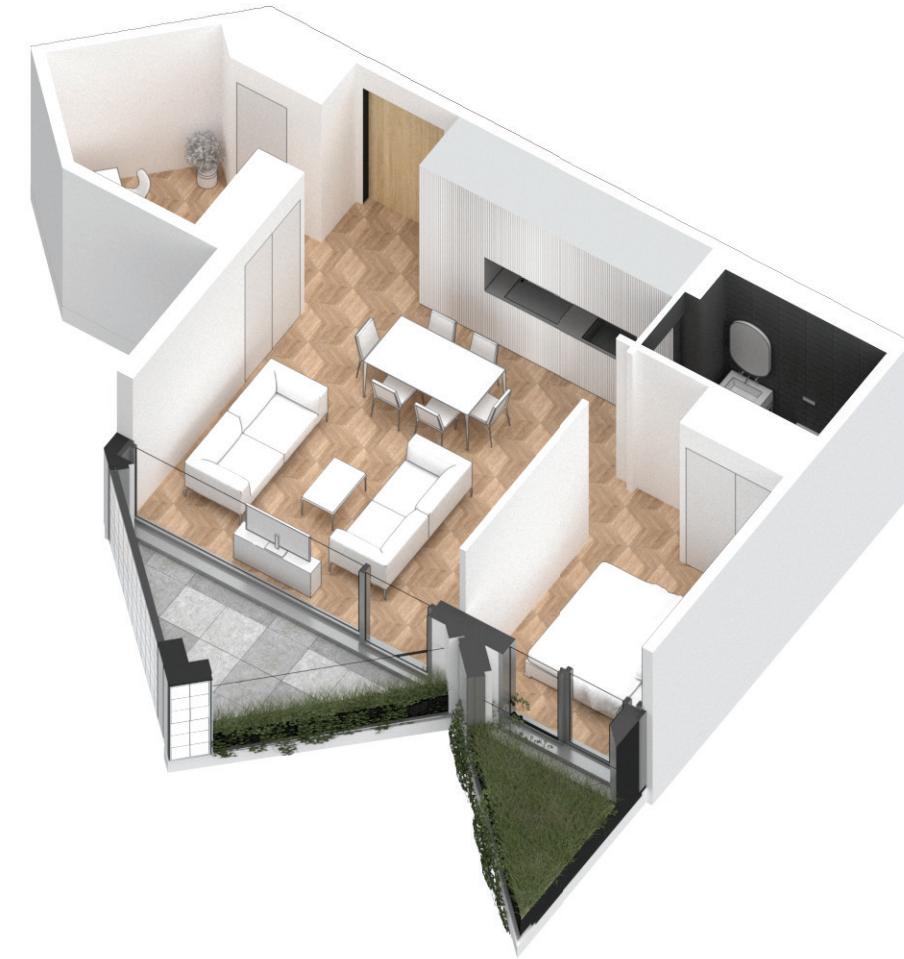
Interior Living:
639 ft²

Exterior Living:
119 ft²

LIVING	16' 1" X 8' 9"
DINING	16' 1" X 7' 3"
BEDROOM	8' 11" X 9' 10"
ATELIER	7' 3" X 5' 10"
BALCONY	13' 0" X 7' 9"



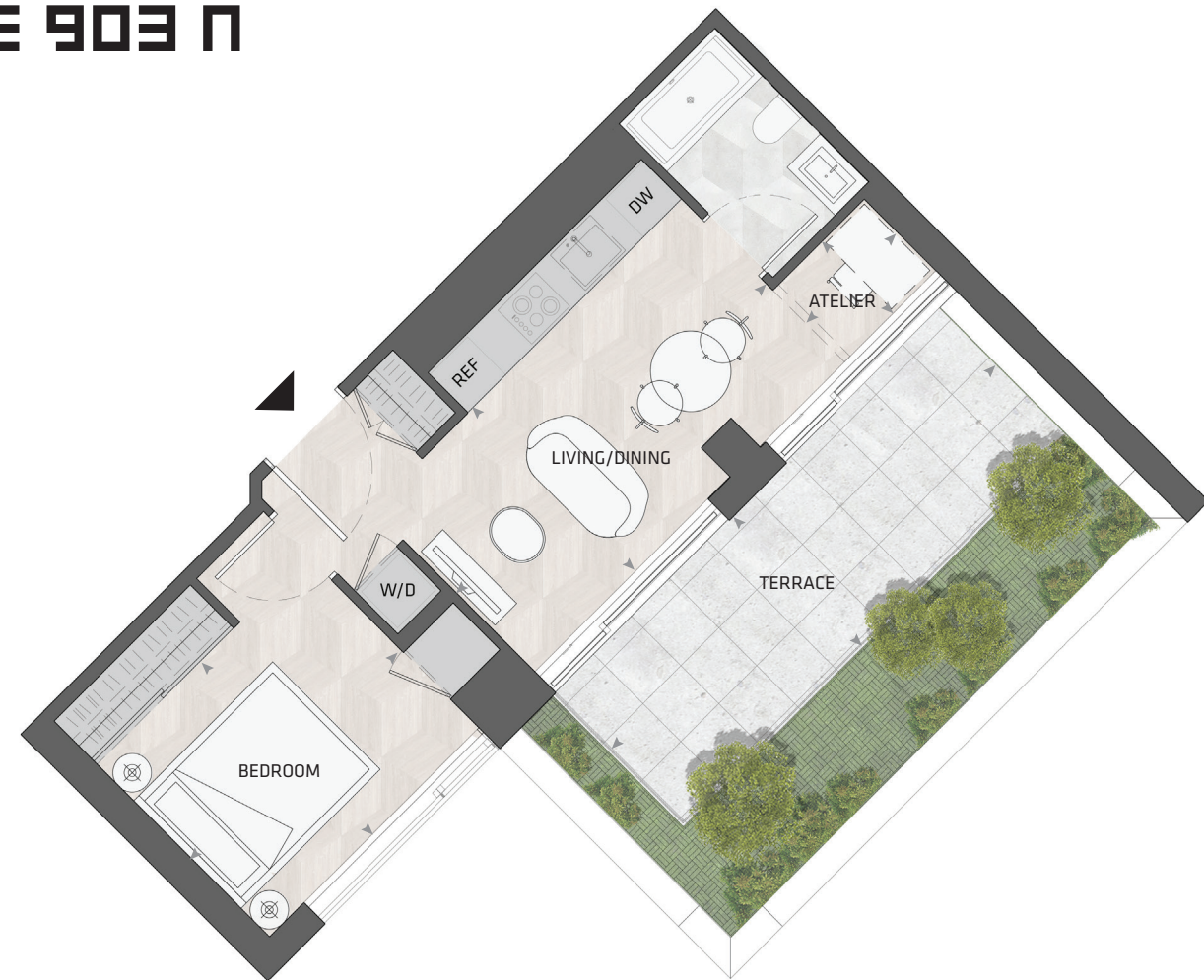
NORTH MOUNTAIN KEYPLAN



All dimensions and specifications are approximate. Certain plans are reverse or mirror image. Balcony square footages are estimated and may vary from that stated. Please see Sales Representative for details. Furniture not included. Refer to key plan for unit location and orientation. E. & O.E.

KING

HOME 903 N



1BD.40

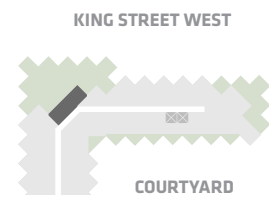
1 Bedroom + Atelier
1 Bathroom

Total Living:
769 ft²

Interior Living:
482 ft²

Exterior Living:
287 ft²

LIVING/ DINING	16' 0" X 8' 5"
BEDROOM	10' 8" X 9' 0"
ATELIER	5' 4" X 4' 0"
TERRACE	21' 2" X 6' 8"



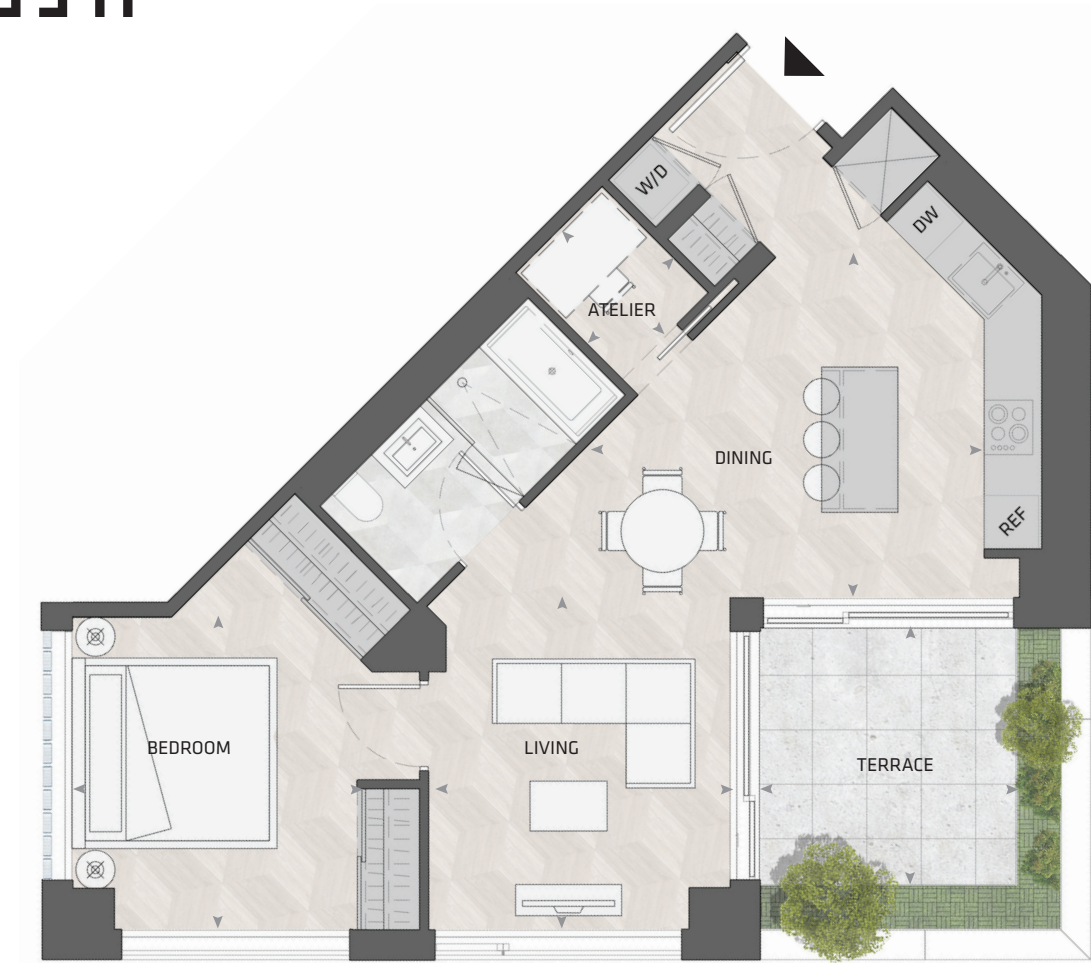
NORTH MOUNTAIN KEYPLAN



All dimensions and specifications are approximate. Certain plans are reverse or mirror image. Balcony square footages are estimated and may vary from that stated. Please see Sales Representative for details. Furniture not included. Refer to key plan for unit location and orientation. E. & O.E.

KING

HOME 909 N



1BD.38

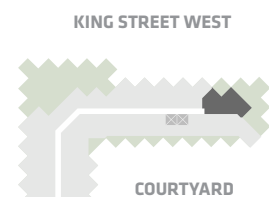
1 Bedroom + Atelier
1 Bathroom

Total Living:
894 ft²

Interior Living:
751 ft²

Exterior Living:
143 ft²

LIVING	10' 8" X 11' 0"
DINING	16' 8" X 16' 2"
BEDROOM	11' 4" X 10' 6"
ATELIER	4' 5" X 5' 5"
TERRACE	9' 1" X 9' 1"



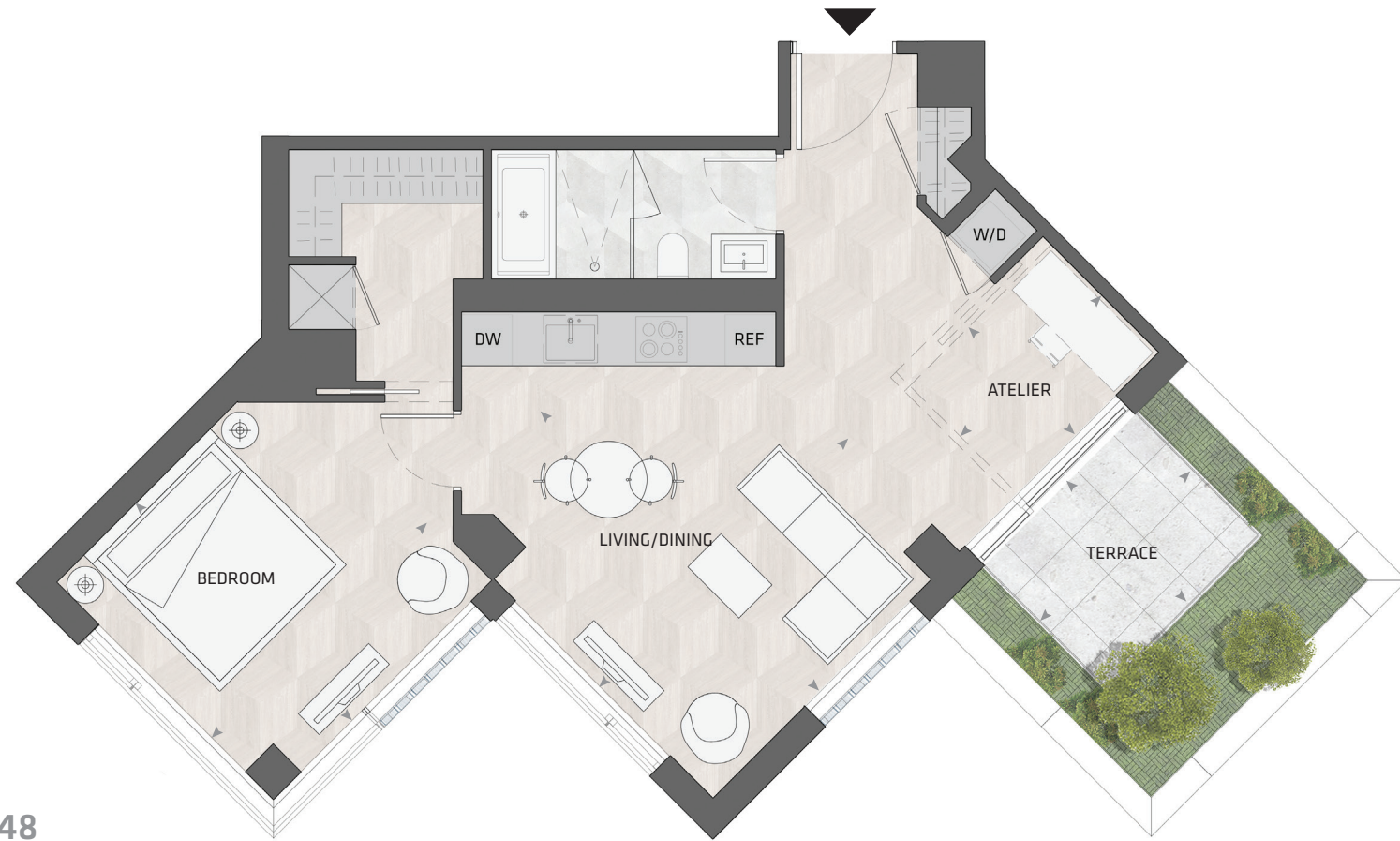
NORTH MOUNTAIN KEYPLAN



All dimensions and specifications are approximate. Certain plans are reverse or mirror image. Balcony square footages are estimated and may vary from that stated. Please see Sales Representative for details. Furniture not included. Refer to key plan for unit location and orientation. E. & O.E.

KING

HOME 810 N



1BD.48

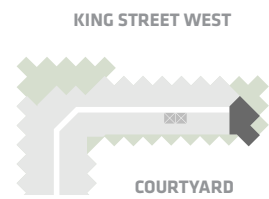
**1 Bedroom + Atelier
1 Bathroom**

**Total Living:
957 ft²**

Interior Living:
790 ft²

Exterior Living:
167 ft²

LIVING/ DINING	13' 5" X 13' 9"
BEDROOM	11' 11" X 11' 10"
ATELIER	7' 0" X 5' 10"
TERRACE	8' 3" X 6' 8"



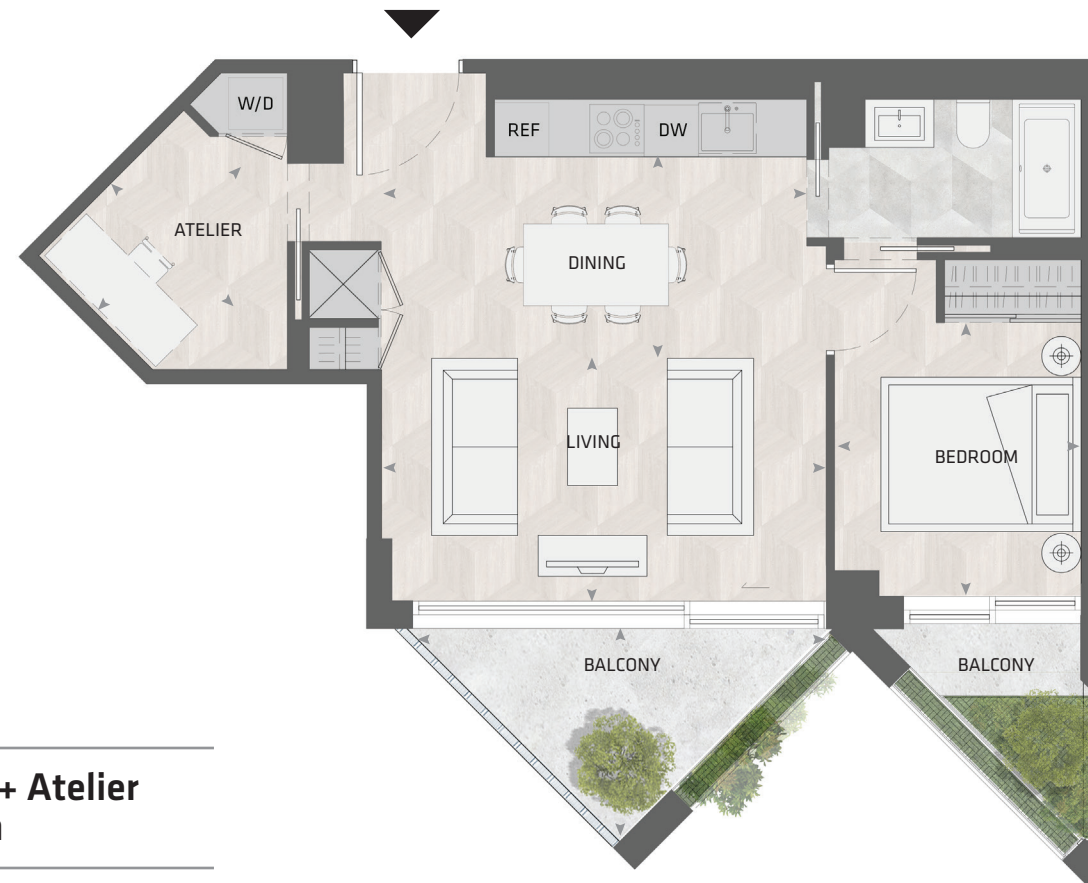
NORTH MOUNTAIN KEYPLAN



All dimensions and specifications are approximate. Certain plans are reverse or mirror image. Balcony square footages are estimated and may vary from that stated. Please see Sales Representative for details. Furniture not included. Refer to key plan for unit location and orientation. E. & O.E.

KING

HOME 702 N



1BD.17

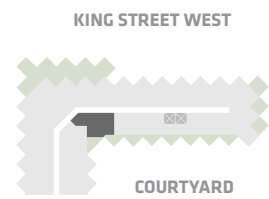
1 Bedroom + Atelier
1 Bathroom

Total Living:
758 ft²

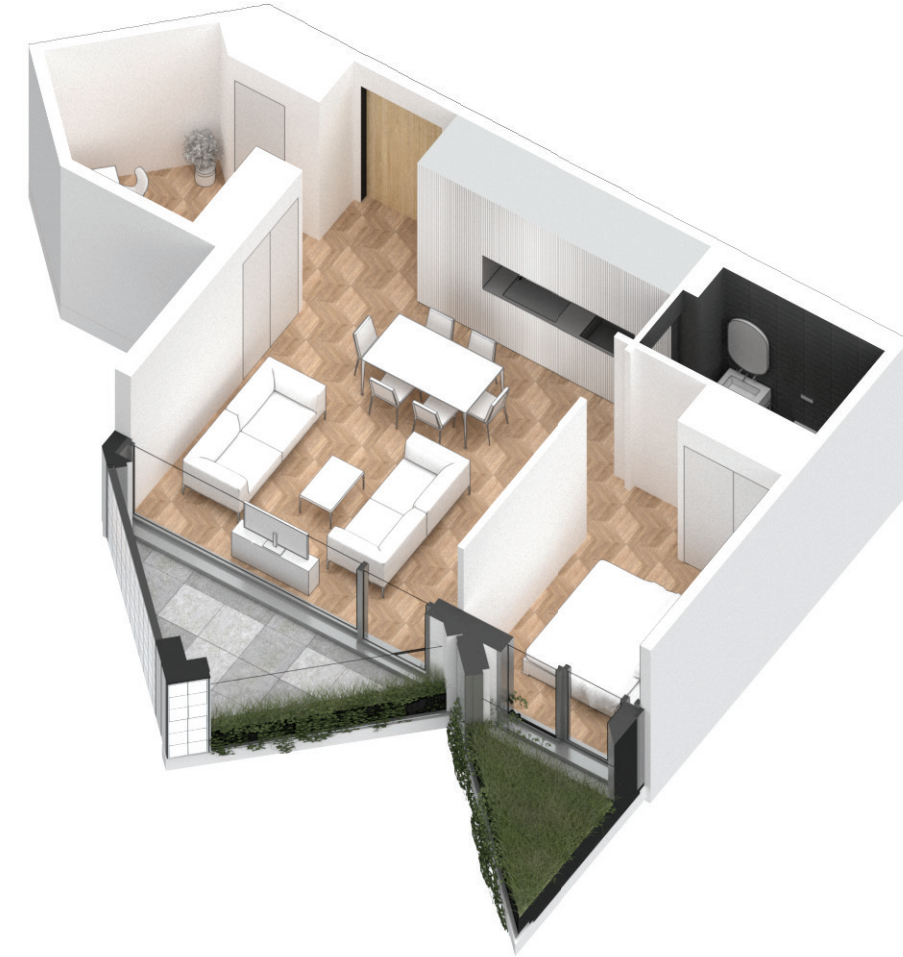
Interior Living:
639 ft²

Exterior Living:
119 ft²

LIVING	16' 1" X 8' 9"
DINING	16' 1" X 7' 3"
BEDROOM	8' 11" X 9' 10"
ATELIER	7' 3" X 5' 10"
BALCONY	13' 0" X 7' 9"



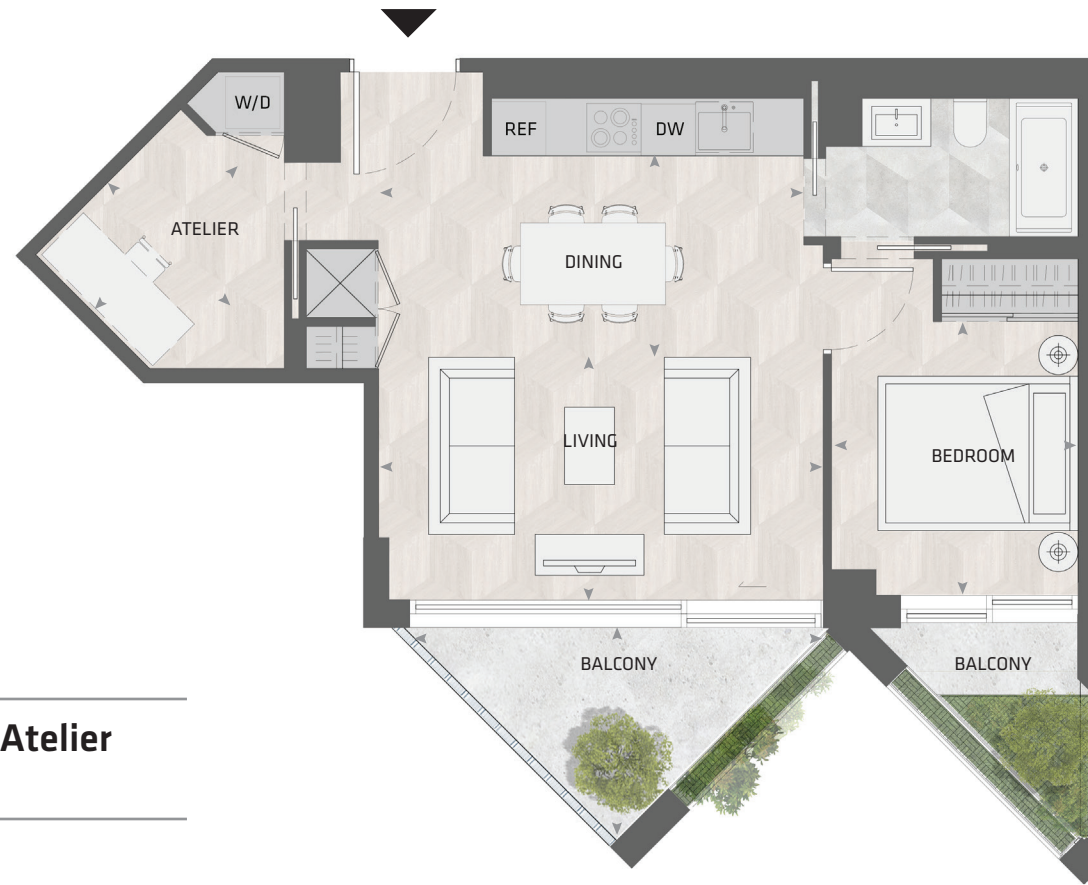
NORTH MOUNTAIN KEYPLAN



All dimensions and specifications are approximate. Certain plans are reverse or mirror image. Balcony square footages are estimated and may vary from that stated. Please see Sales Representative for details. Furniture not included. Refer to key plan for unit location and orientation. E. & O.E.

KING

HOME 802 N



1BD.17

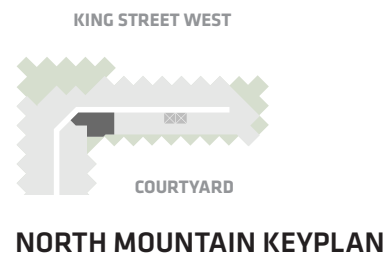
**1 Bedroom + Atelier
1 Bathroom**

**Total Living:
754 ft²**

Interior Living:
636 ft²

Exterior Living:
119 ft²

LIVING	16' 1" X 8' 9"
DINING	16' 1" X 7' 3"
BEDROOM	8' 11" X 9' 10"
ATELIER	7' 3" X 5' 10"
BALCONY	13' 0" X 7' 9"



All dimensions and specifications are approximate. Certain plans are reverse or mirror image. Balcony square footages are estimated and may vary from that stated. Please see Sales Representative for details. Furniture not included. Refer to key plan for unit location and orientation. E. & O.E.

KING

HOME 703 N



1BD.39

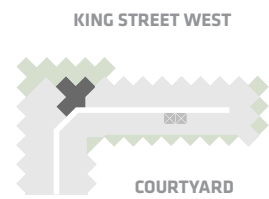
1 Bedroom + Atelier
1 Bathroom

Total Living:
812 ft²

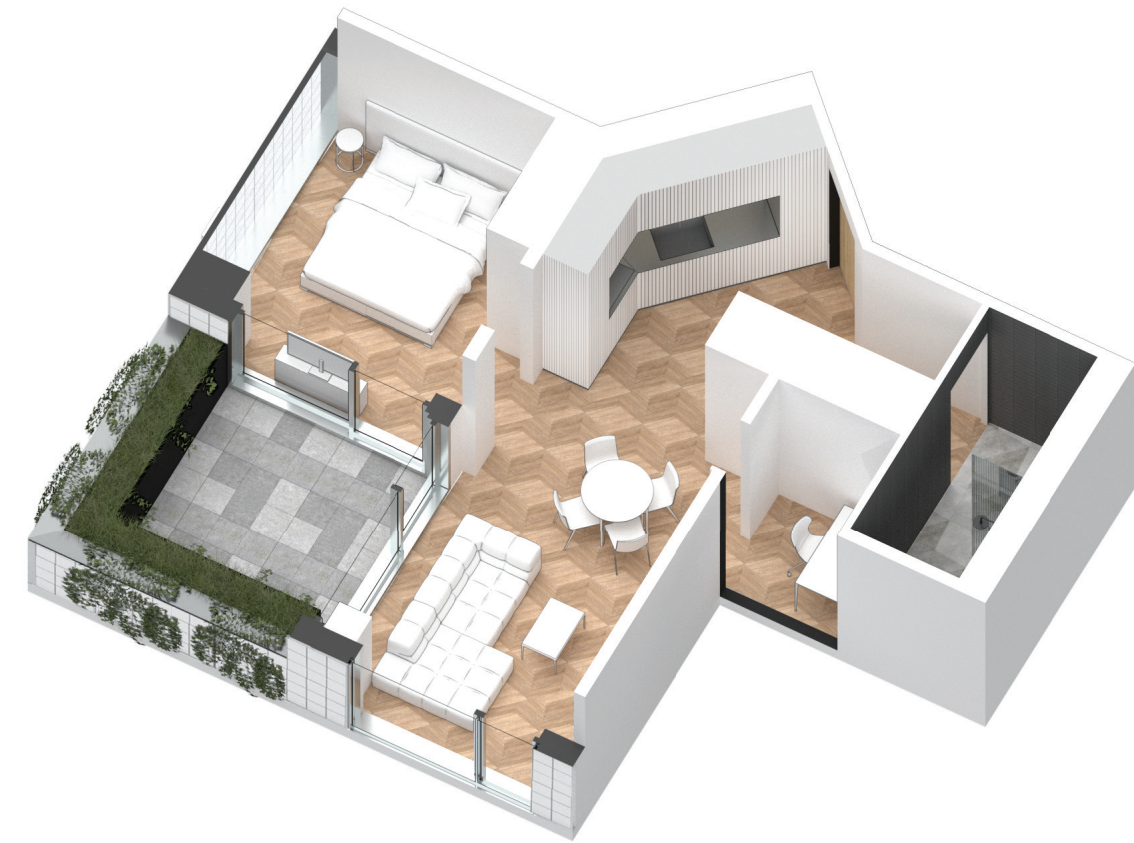
Interior Living:
668 ft²

Exterior Living:
143 ft²

LIVING	11' 8" X 10' 11"
DINING	11' 0" X 6' 3"
BEDROOM	10' 0" X 11' 7"
TERRACE	9' 1" X 9' 1"



NORTH MOUNTAIN KEYPLAN



All dimensions and specifications are approximate. Certain plans are reverse or mirror image. Balcony square footages are estimated and may vary from that stated. Please see Sales Representative for details. Furniture not included. Refer to key plan for unit location and orientation. E. & O.E.